

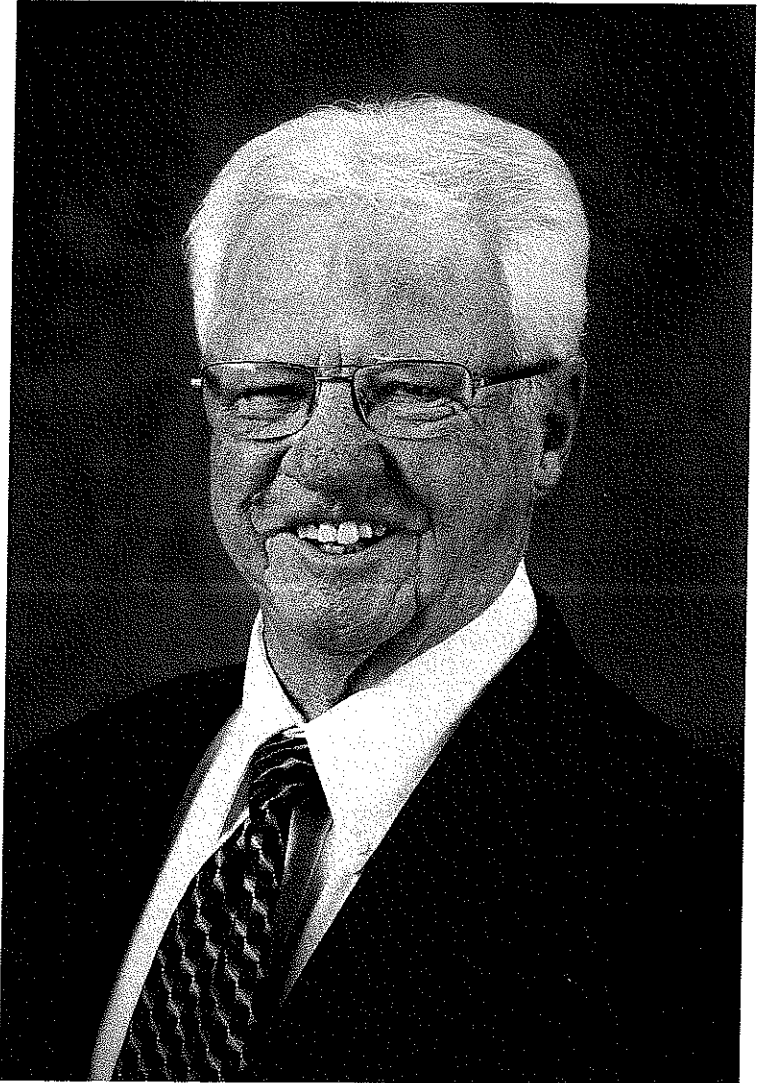


CINEMA

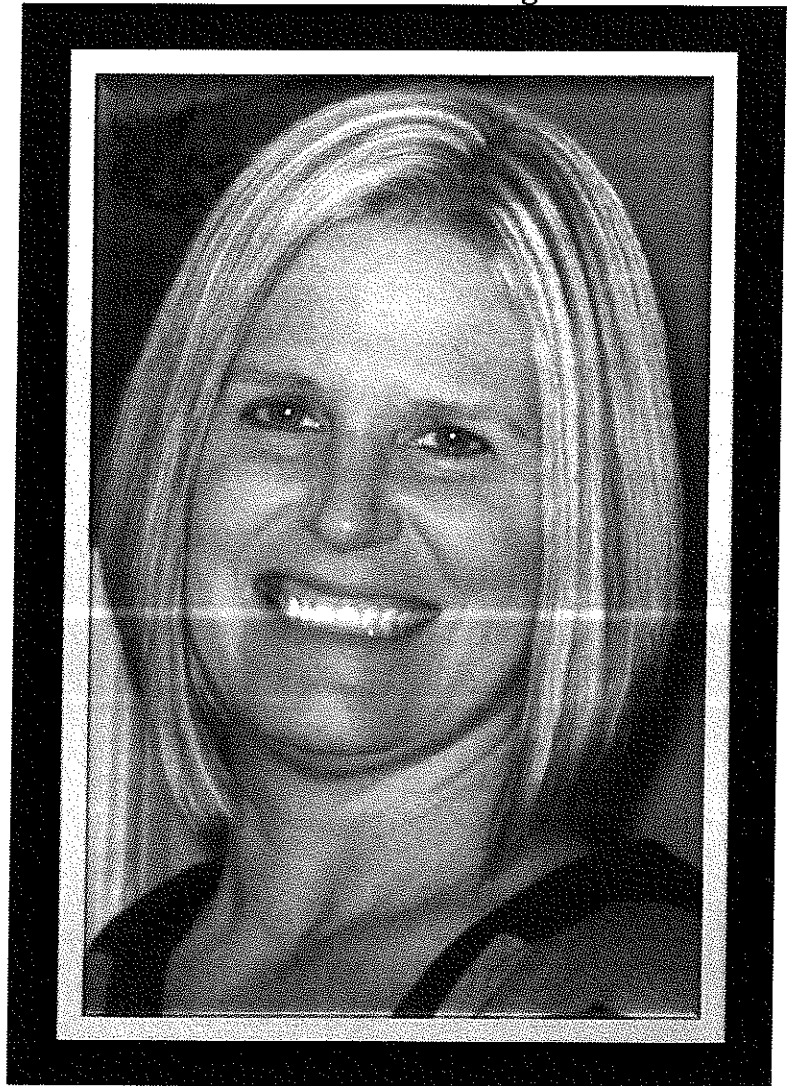
**KANSAS COUNSELING ASSOCIATION
AWARDS DINNER
WICHITA 2011**

~His knowledge and work on the advisory council has helped every counselor in Kansas.

Nominated for Hall of Fame



Nominated for Counselor of the Year by
Southeast Kansas Counseling Association



Nominated for Counselor of the Year by
Kansas School Counseling Association



~Kristin works hard to be certain that each student in our school is respected, cared for, and made to feel important on a daily basis.

**Nominated for Counselor of the Year by
North Central Kansas Counseling Association**



And now...

Introducing the

Counselor of the Year

And

Hall of Fame

Nominees

Dr. Fred Bradley

Professor, CACREP Liaison, and Clinical Coordinator,
Counseling and Student Development Program
Department of Special Education, Counseling and Student Affairs
College of Education, Kansas State University

Education

Ph.D. Counselor Education, University of Wyoming
M.Ed. Counselor Education, University of Wyoming
Educational Administration, University of Northern Colorado
Middle Eastern Studies, American University of Beirut
European History, University of Colorado
B.A. Social Science, University of Northern Colorado

Memberships and Leadership Positions

American Counseling Association
Association for Counselor Education and Supervision (ACES)
Doctoral Program Interest Group, Chairman
American School Counselor Association (ASCA)
Association for Specialists in Group Work (ASGW)
National Career Development Association (NCDA)
North Central Association for Counselor Education and Supervision
Kansas Counseling Association: KACES, KASGW, KSCA, and KCDA
KASGW, Chairman
Guidance Communications Council, KSU Department of Education

Awards & Licenses

Kansas Counselor of the Year, 2000
Distinguished Professional Service Award, NCACES, 1998
Distinguished Service Award, KCA, 1995
LCPC, Behavioral Sciences Regulatory Board, State of Kansas
National Certified Counselor (NBCC)

Dr. Fred Bradley has conducted more than 400 workshops and made more than 500 presentations to diverse audiences such as parents, teachers, business personnel, military, mental health workers and other counseling professionals. Topics of presentation included communication, group dynamics, non-biased counseling, parenting, child discipline, dropouts, career counseling, family relationships and motivation of children and adolescents.

Comments from Nomination Letters

~Dr. Bradley works tirelessly to support both his graduate students and fellow colleagues.
~Fred is one of those rare individuals that made happen those things no one else wants to do.
~Fred will lead the charge with the highest degree of professionalism and enthusiasm.

Teresa Spangler

Middle School Counselor
Pittsburg Community Middle School
Pittsburg

Education

M.S. K12 School Counselor, Pittsburg State University
M.S. Elementary Teaching, Pittsburg State University
B.S. Elementary Teaching, Pittsburg State University

Memberships and Leadership Positions

Kansas Counseling Association
Southeast Kansas Counseling Association
President
Kansas School Counselors Association

Counseling Programs & Activities

Crawford County Coalition member
Crawford County Prevention Team member
Coordination with community agencies including:

- Restorative Justice Authority
- On the Right Track Program
- Challenger Program
- Family Preservation
- Kansas Children's Service League
- Crawford County Mental Health

Board member and treasurer of Caring for Kids
Advisory board for Vie Medical clinic-crisis pregnancy center
Implemented "Dragon Guides" for new students
Led groups for students with incarcerated parents

Comments from Nomination Letters

~Teresa is dedicated, passionate, empathetic, knowledgeable, an effective communicator, and relentless in her efforts to positively impact each and every student, staff member and patron she comes in contact with.
~I appreciate her openness and friendliness.
~She understands the big picture and shows empathy.
~Teresa touches student's lives by listening, guiding them, encouraging them, and never giving up on them.
~Teresa has an innate and natural talent at developing rapport with students and working as a professional school counselor.

Kimberly Urenda

High School Counselor
Blue Valley West High School
Overland Park

Education

M.S. K12 School Counselor, Emporia State University
B.S. 7-12 English Education, Emporia State University
Licensure in School Leadership K12, Baker University

Memberships and Leadership Positions

Kansas Counselor Association
Human Rights Chairwoman, Co-Chair
Northeast Kansas Counselor Association
President and secretary
Kansas School Counselor Association
President-Elect
American School Counselor Association
NAACP
Young Latino Professionals

Counseling Programs and Activities

Relational Aggression presentations
Mistaken Goals
Freshmen Enrollment - Spring at Middle Schools
ACT Information and Registration
Counseling Boys in Our Society
Counseling Boys in Our World
Adjunct Professor & Enrollment Facilitator for ESU Counselor Education Metro Program

Comments from Nomination Letters

~She has been a major influence in the development and implementation of "Freshman First Day" which helps 9th graders make a smooth transition.
~She is very approachable and gives freely of her spare time to support, train, and mentor students.
~Kim has served countless hours, unselfishly, to promote the profession of school counseling.
~Kim is a natural leader who does not wait to be shown what to do or how to do it. She is outgoing and develops relationships with all of her students and families.

Kristin Wright

Middle School Counselor
Clay Center Community Middle School
Clay Center

Education

M.S. K-12 School Counseling, Kansas State University
National Board Certified Teacher
School Counseling Early Childhood through Young Adult
B.S. 7-12 Mathematics, Bethany College

Memberships and Leadership Positions

Kansas National Education Association
Clay County Education Association
Kansas Counseling Association
Awards Committee
Strategic Planning Chairwoman
North Central Region President
Kansas School Counseling Association
Middle Level Vice President
American School Counseling Association
Clay Counts Co-Chair

Counseling Programs and Activities

YouthFriends District Coordinator and Building Connector
USD #379 Crisis Plan Team
Building Leadership Team
Site Council Member
Positive Behavior Support Team Member
KCA Conference presenter
Clay Counts
Advisory Program
Mentor Lunches
Mix It Up at Lunch
Grant writer

Comments from Nomination Letters

~Kristin has been a strong influence in the development of the counseling services.
~She is a true counseling professional who is genuinely focused on student growth, achievement, and individual student development.

Explanations of Awards

Counselor of the Year - Honoring an outstanding Kansas Counselor who has demonstrated leadership in KCA, a Kansas school district and/or the community, with dedication and innovative programs to encourage every client to grow in healthy ways.

Hall of Fame - Honoring a Kansas Counselor who has significantly contributed to the field of counseling or guidance at national, state, and/or local levels.

Distinguished Service - Honoring a KCA member for outstanding service to KCA.

See Yourself HERE next Year!



**Nominations for 2011-12 awards are being
accepted October through November, 2011!**

Thank YOU for coming!